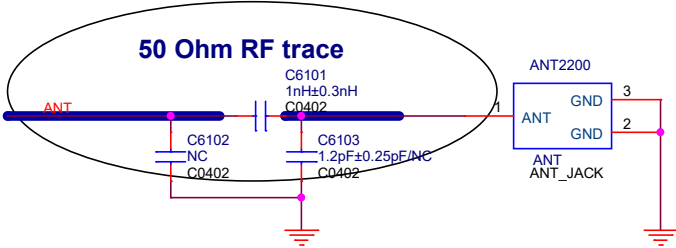
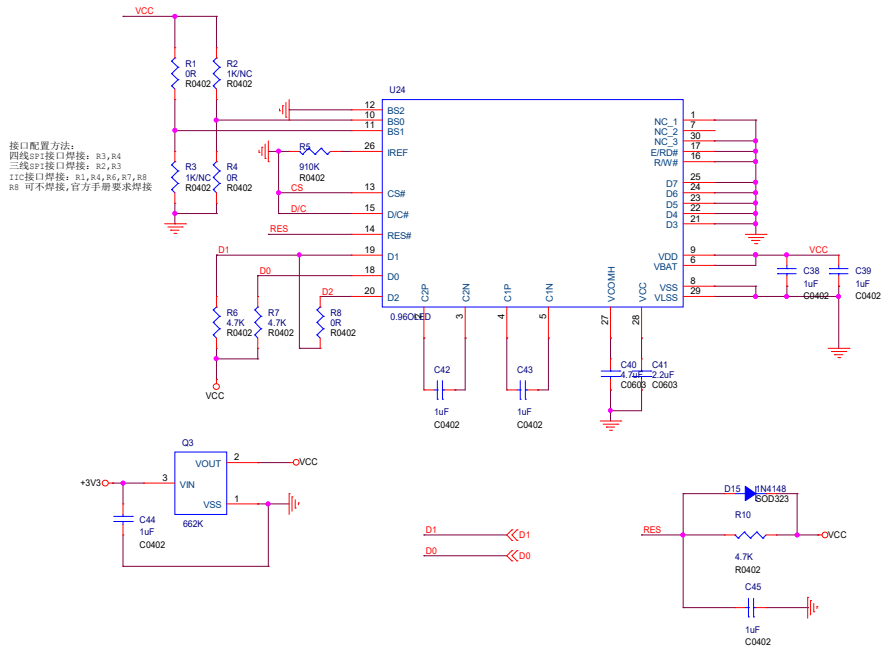


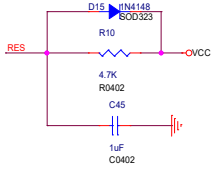
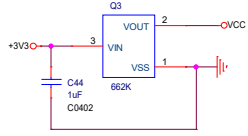
RST=IRQ/RESET
 IO18=NSS/SEL
 IO5=SCK
 IO27=MISO/SDI
 IO19=MISO/SDO
 IO26=DI0/IO0



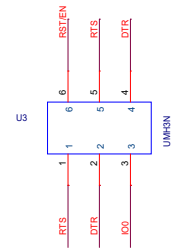
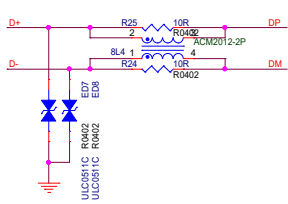
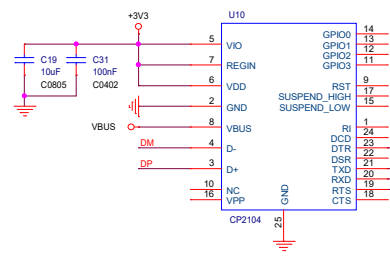
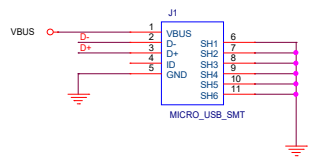
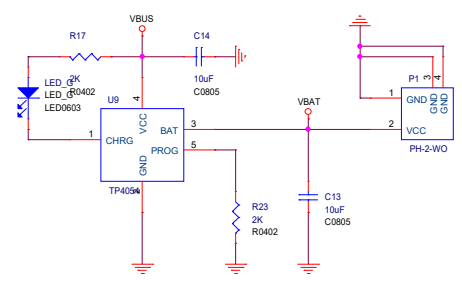
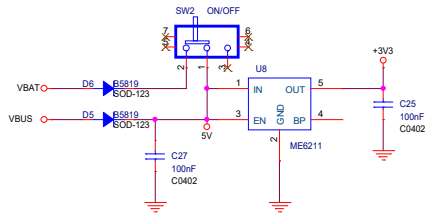
Title		
<Title>		
Size	Document Number	Rev
A	<Doc>	<RevCo
Date:	Thursday, December 07, 2017	Sheet 1 of 1



接口配置方法:
 四线SPI接口焊接: R3, R4
 三线SPI接口焊接: R2, R3
 IIC接口焊接: R1, R4, R6, R7, R8
 R8 可不焊接, 官方手册要求焊接



Title		<Title>
Size	Document Number	Rev
B	<Doc>	<Rev Code>
Date:	Thursday, December 07, 2017	Sheet 1 of 1



Title		<Title>
Size	Document Number	Rev
B	<Doc>	<Rev>
Date: Thursday, December 07, 2017		Sheet 1 of 1